

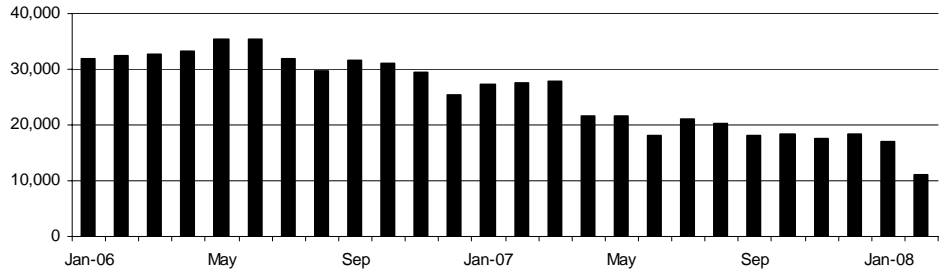
Portland Metro Economic Indicators

March 2008

Employment Growth

Portland Metro: Year-over-year

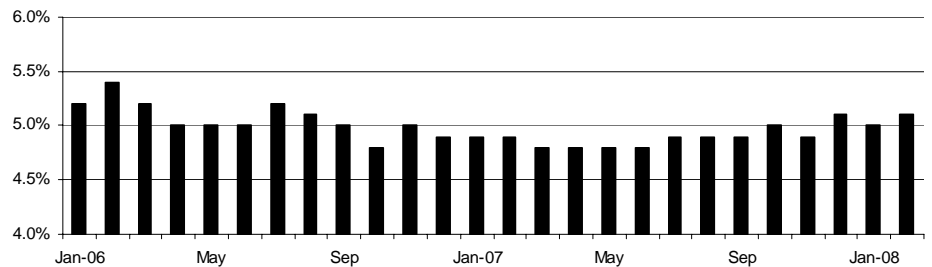
February 2008	11,000
1 Month Ago	16,900
1 Year Ago	27,700



Unemployment Rate

Portland Metro: Seasonally Adjusted

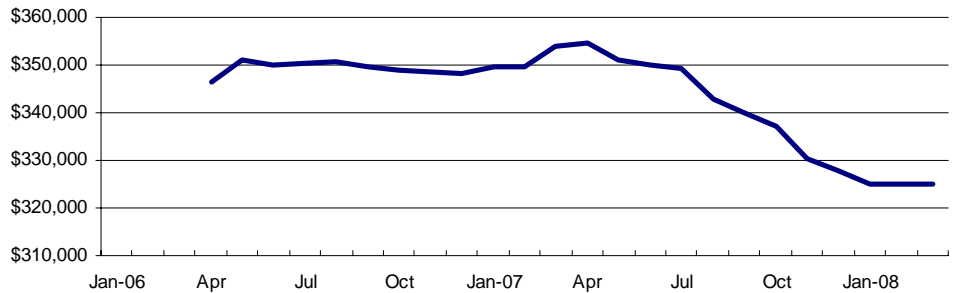
February 2008	5.1%
1 Month Ago	5.0%
1 Year Ago	4.9%



Median House Price

Portland Metro: MLS Asking Price

March 2008	\$324,950
1 Month Ago	\$324,925
1 Year Ago	\$353,850



Retail Gas Price

US West Coast : Regular

Mar 24 2008	\$3.52
1 Month Ago	\$3.27
1 Year Ago	\$3.02



Christian Kaylor Workforce Analyst

Christian.R.Kaylor@state.or.us